

GENERAL NOTES

"All taking down and removals to be carefully undertaken in accordance with Conservation Specifications by David Stalley Conservation Architects."

"Surviving original multi-pane sash windows to Kirk building to be carefully conserved, retaining single panes of glass in accordance with Conservation Specifications by David Stalley Conservation Architects."

"Non-original 20th Century sash windows to Seminary to be split/d where breaks and half cells are changed. New aluminum double glazed units to be fitted into existing frames. All in accordance with detail drawings showing glazing bar profile impact and Conservation Specifications by David Stalley Conservation Architects."

"All services to Seminary to reuse existing routes where possible with any new routes and installations to be carried out in accordance with Conservation Specifications by David Stalley Conservation Architects."

"Minor repairs to leaded and stained glass in Assembly Hall are limited to repair of opening sections and glass replacement where panes are broken. No storm or secondary glazing proposed. All to be carried out in accordance with Conservation Specifications by David Stalley Conservation Architects."

"Stained glass over front entrance to chapel is set in a timber frame and is to be carefully removed to agreed location in accordance with Conservation Specifications by David Stalley Conservation Architects."

"Slate roofs to Seminary and Chapel to be restored using Blue Bangor slate and stepped lead valleys in accordance with Conservation Specifications by David Stalley Conservation Architects."

"All cast-iron rainwater goods to be retained and renewed with any replacements where goods are beyond repair to be in cast iron. All in accordance with Conservation Specifications by David Stalley Conservation Architects."

"Render to be lightly cleaned with dilute bicarbonate in accordance with Conservation Specifications by David Stalley Conservation Architects."

"Limestone strings and sills to be carefully cleaned using Doff or similar steam cleaning - no abrasive or chemical cleaning. All in accordance with Conservation Specifications by David Stalley Conservation Architects."

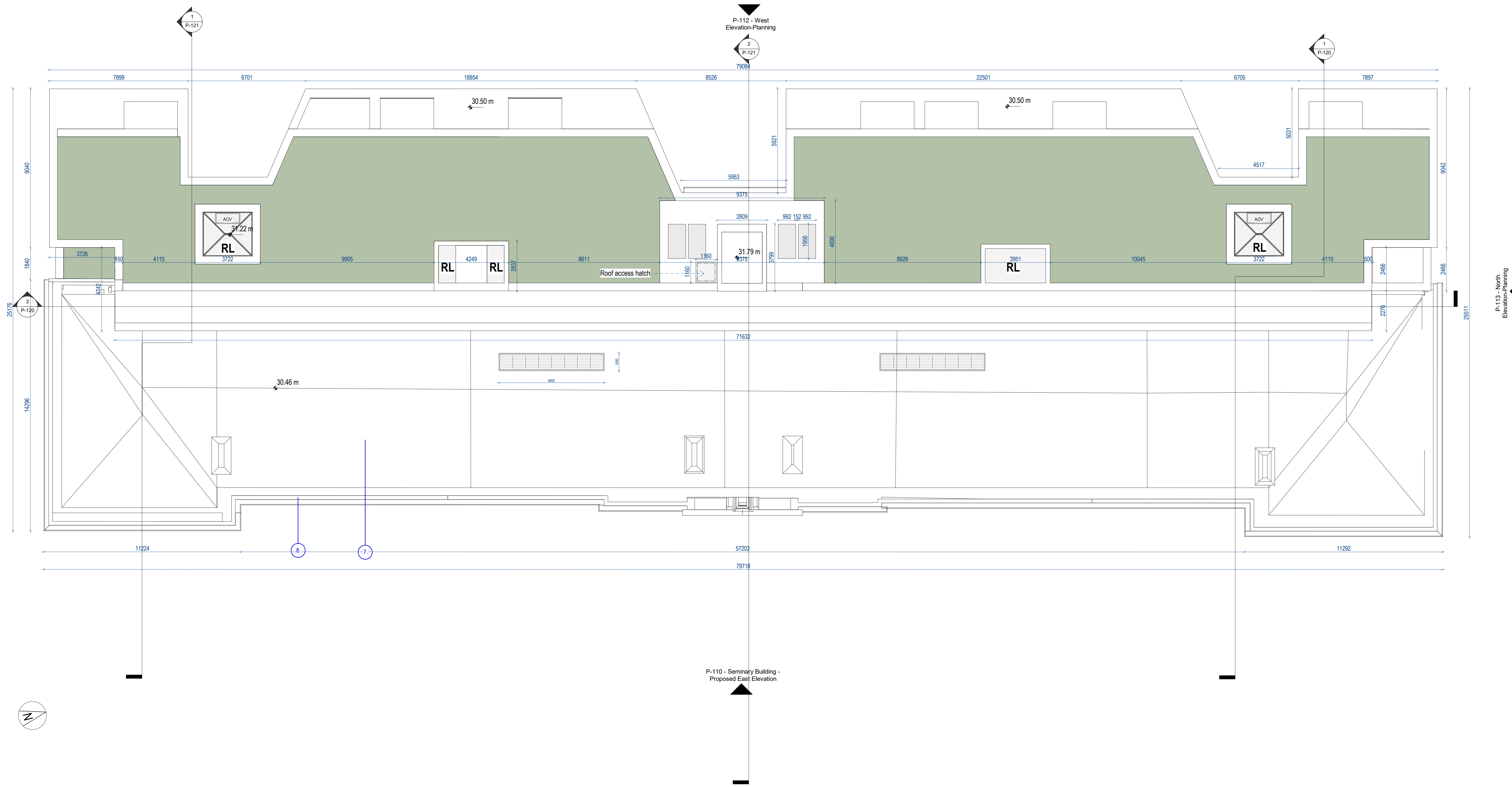
"Granite sills, coping etc to be carefully cleaned using a light calcium carbonate abrasive in accordance with Conservation Specifications by David Stalley Conservation Architects."

"Wholesale repointing is not required and localized pointing where necessary will be carried out using a lime (NL3.5) mortar and aggregate and lime mix to match existing bedding mortar tone and texture. All in accordance with Conservation Specifications by David Stalley Conservation Architects."

DRAWING LEGEND

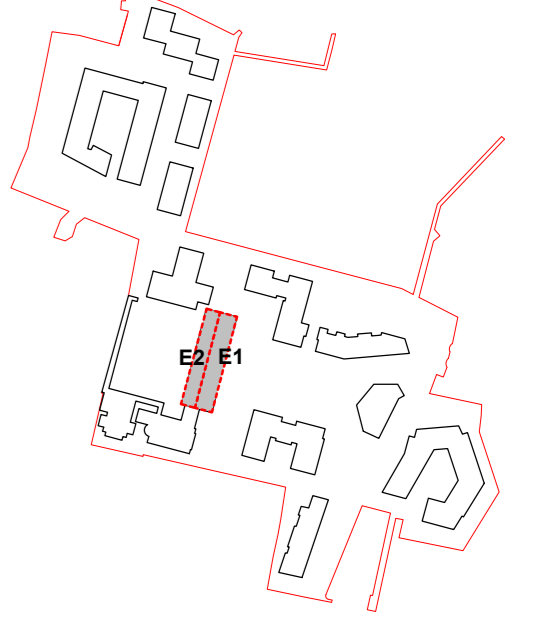
EXISTING

PROPOSED



1 Seminary Building - Proposed Roof Plan
Scale - 1:100

ALL DIMENSIONS TO BE CHECKED ON SITE.
NO DIMENSIONS TO BE SCALED FROM THIS DRAWING.
DRAWINGS TO BE READ IN CONJUNCTION WITH RELEVANT CONSULTANT DRAWINGS.



A0
N
1

REV	DATE	DESCRIPTION	CHK	DRN
P2	APR/21	Issued for Planning		SP
P1	NOV/20	Issued for Pre-Application Consultation	DT	IB

ISSUED FOR PLANNING APPROVAL

APPLICANT NAME
CWTC Multi Family (CAV) acting on behalf of its sub-kind DBTR DR1 Fund

PROJECT NAME
186 Grafton Street, Dublin 2

LOCATION
Holy Cross College, Cariffe Road, Dublin 3 and Drumcondra Road Lower, Drumcondra, Dublin 9

DRAWING
Seminary Building - Proposed Roof Plan

PROJECT NUMBER	DATE
CLN-MCM-DR-ZZ-MS-A-0003	06/02/20

SCALE @ A0
As indicated
DRAWN/CHECKED
IB/ROC

STATUS CODE	DRAWING NUMBER	REVISION
A1	CLN-MCM-E1-ZZ-DR-A-P-105	P2

Henry J Lyons
Architecture + Interiors
henryj Lyons.com
+353 1 889 3333
info@henryj Lyons.com
51-54 Parnass Street
Dublin, D02 X468



O'Donnell+Tuomey

mcculloughmulvinarchitects

NMP
Niall Manning + Partners

o mahony pike

BM
BARRITT MANDY

